

## General Info

Sedan, FRA

N 49° 39.5' E 05° 02.2' Mag Var: 1.2°W

Elevation: 513'

Public, VFR, No Customs, Landing Fee

Pattern Altitude: 1000 feet AGL

Fuel: 100LL

Time Zone Info: GMT+1:00 uses DST

## Runway Info

Runway 08-26 2625' x 98' paved

Runway 08 (76.0°M) TDZE 509'

Right Traffic

Runway 26 (256.0°M) TDZE 513'

## Communications Info

Sedan Multicom **123.5** Non-English

## Notebook Info

JEPPESEN

02 OCT 09

19-1

SEDAN

DOUZY

FRANCE

LFSJ

Elev **513'** / 156 m (19 hPa)

N49 39.5

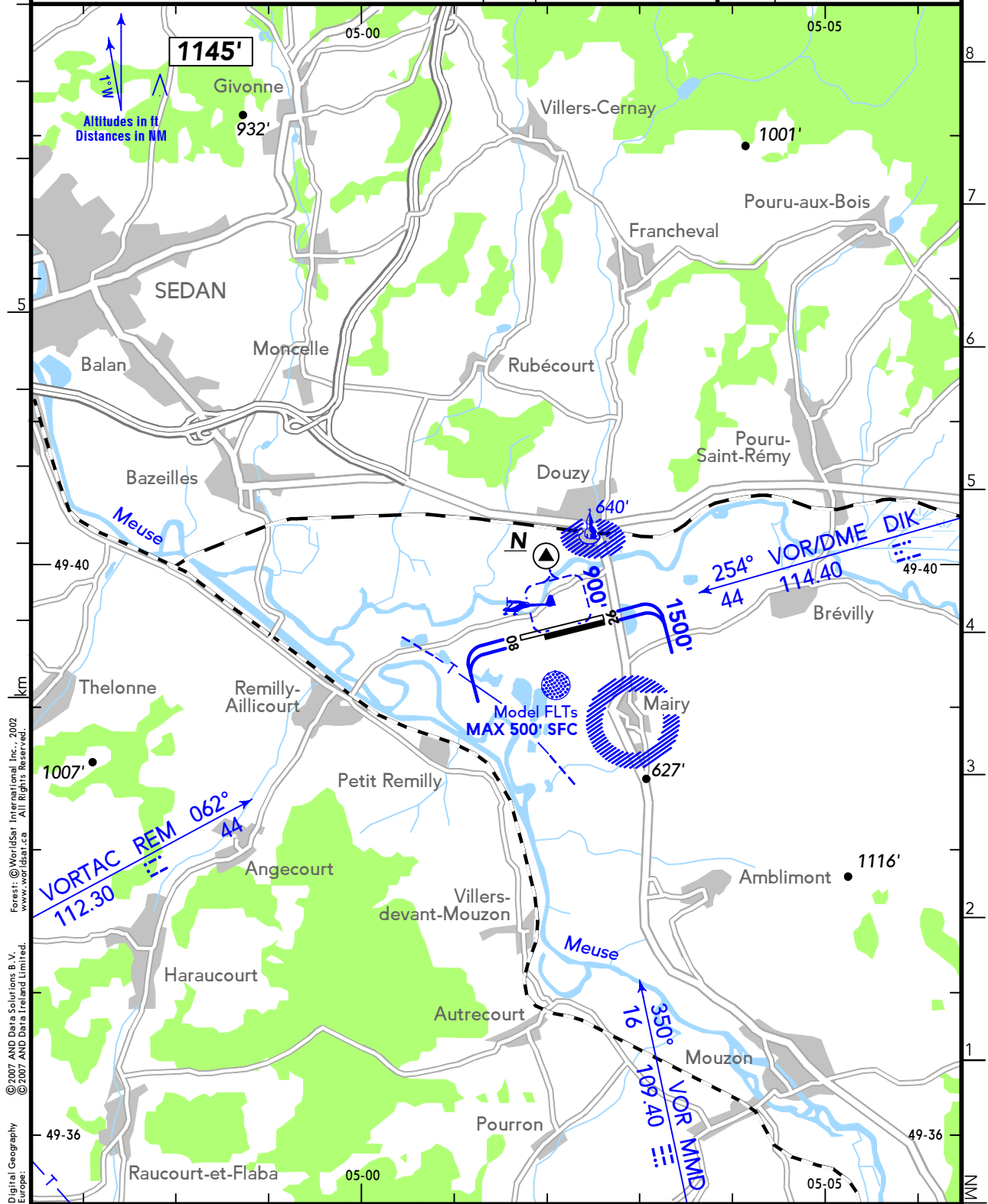
E005 02.2

3.2 NM SE Sedan

(Air/Air)

SEDAN **123.50**

RWY	ILS	RWY	ILS



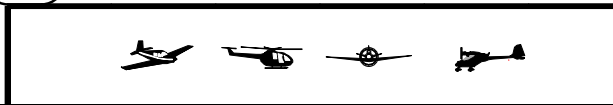
© 2007 AND Data Solutions B.V. Europe: Digital Geography © 2007 AND Data Ireland Limited. Forest: © WorldSat International Inc., 2002 www.worldsat.ca All Rights Reserved.

CHANGES: AD ELEV - COM - VAR - Airspace - Traffic Circuit - RWY 01/19 withdrawn - Direction Arrows - Highest OBST.

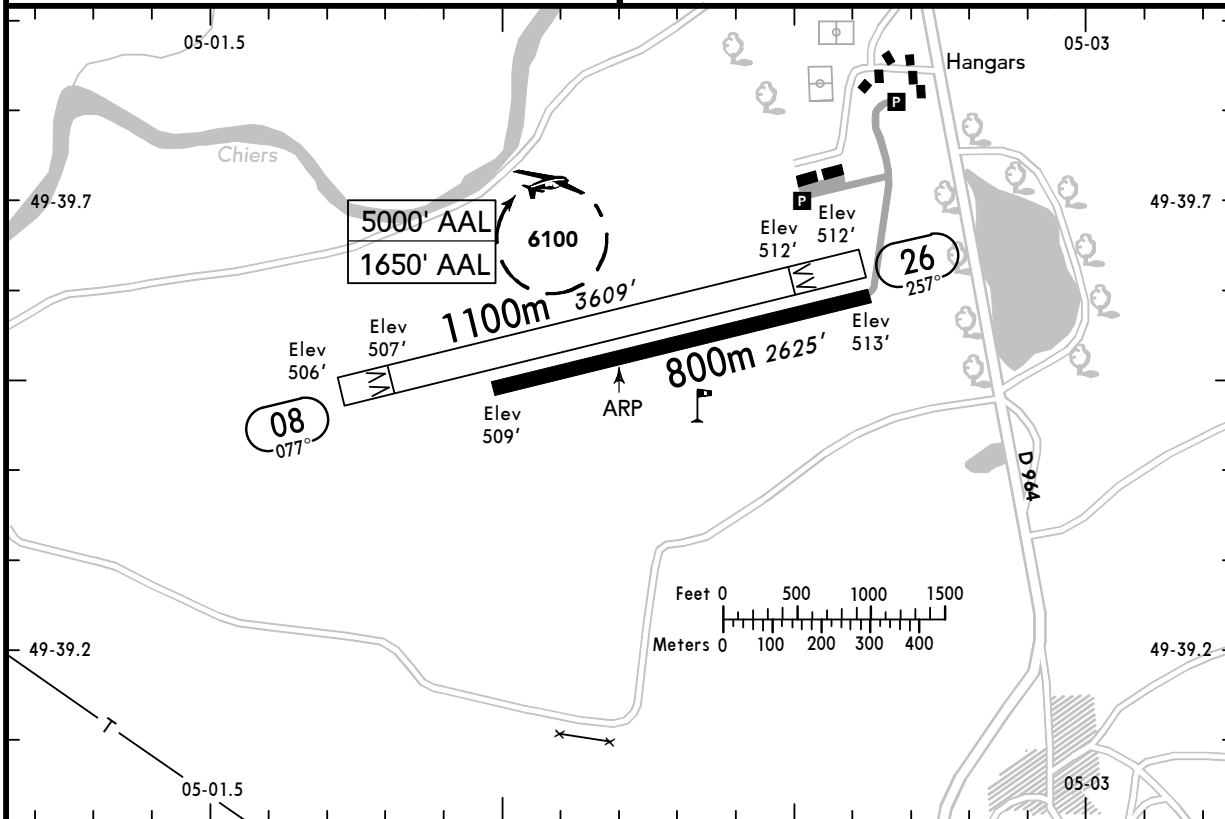
© JEPPESEN, 1986, 2009. ALL RIGHTS RESERVED.

**SEDAN**  
DOUZY  
FRANCE

19-2 02 OCT 09



(FIS)  
PARIS INFORMATION **125.70**



(O/R)

—

RWY No	Dimension (m) - Surface	TORA (m)	LDA (m)	Strength	Lights
08	1100 x 60 Unpaved	1100	995		—
26		1100	950		
08	800 x 30 Paved	800	800	5.7t MPW	—
26					

If wind speed less than 4 KT, use RWYs 08.

Par vent inférieur à 4 KT, utiliser pistes 08.

During rainy period, pilots are restricted to use the paved RWY only and the east paved TWY.

En période de pluie, n'utiliser que la piste macadam et le TWY Est en tarmac.

Variation in level between paved RWY and grass RWY 08/26. Taxiing on this part of AD is not recommended.

Existence d'une dénivellation entre la piste revêtue et la piste non revêtue 08/26. Le roulage sur cette zone est déconseillé.

Radio use highly recommended.

Utilisation de la radio vivement recommandée.